

The Weekly Comet Update

From Tom Meyer, Superintendent of the Bellevue Community School District

Believe in the Blue! Believe in Learning! Believe in Bellevue!

District-Wide COVID-19 Information - December 10

The number of students and staff in quarantine and testing positive has decreased since the Thanksgiving Break in our district buildings. At this time, we have <6 active cases (recognize we cannot disclose a number that is less than six based on confidentiality of those in the school system).

Total Number of Students currently in Quarantine/Monitored as of 12.10.20

Elementary	7
MS/HS	<1

My Mask Protects YOU

Your Mask Protects ME

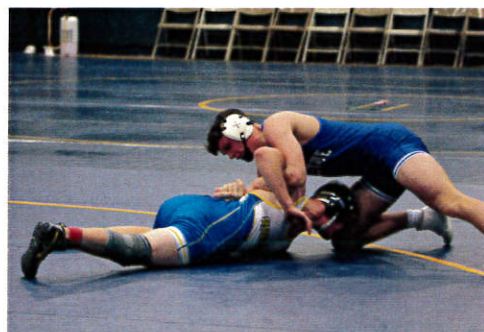


Students have been active with their learning over the last several months in our district. Below are some recent highlights of learning in both buildings, along with extracurricular activities.

State Dance Competition "Balloons over Broadway" at Bellevue Elementary Makerspace - Comet Wrestling - Iowa Department of Public Health Measures



- Soloists:**
 Macy Heim - Division 1 Rating
 Allison Eggers - Division 1 Rating
 Adessa Leibfried - Division 1 Rating
 Lauren Keil - Division 2 Rating
 Madison Hachmann - Division 2 Rating
 Lillion Kolln-Nemmers - Division 2 Rating
- Team Dances:**
 Hip Hop - Division 1 Rating (8th place)
 Pom - Division 1 Rating (7th place)
 Lyrical - Division 1 Rating (5th place)



Summary of Enhanced Public Health Measures

Effective Thursday, Dec. 10 at 12:01 a.m. through Wednesday, Dec. 16 at 11:59 p.m.

Mask Use: Indoor spaces open to the public & State executive branch buildings

- No change

Gathering Restrictions: Social, community, business, or leisure gatherings

- No more than 15 people indoors and 30 people outdoors
- These restrictions apply to wedding receptions, conventions, fundraisers, and other nonessential gatherings but **do not** apply to gatherings that occur during the ordinary course of business or government

Sporting and Recreational Events:

- Only **two spectators** permitted for each youth or adult athlete, cheerleader, pep band member, or organizer staff, and must wear a mask and maintain 6 feet distance from other spectators
- Youth and adult participants can be closer than 6 feet and are not required to wear masks

High School Sports & Extracurriculars: Sporting, recreational, and extracurricular events

- Only **two spectators** permitted for each high school athlete, performer, competitor, cheerleader, pep band member, or staff member, and must wear a mask and maintain 6 feet distance from other spectators
- Students participating can be closer than 6-feet and are not required to wear masks

Restaurants and Bars: Restaurant or bar, including a wedding reception venue, winery, brewery, distillery, country club, or other social or fraternal club

- Last call for in-person services at 10:00pm (includes all venues serving alcohol)
- May open at 4:00am
- No bar seating
- Masks required when not seated (while playing games, dancing, etc.)
- Six feet distancing between groups
- Groups limited to 8 people unless larger group is all same household
- Seated when eating or drinking and limit congregating

Fitness Centers: Fitness centers, health clubs, health spas, gyms

- Group fitness activities are allowed if a 6-foot distance is maintained

Casinos & Gaming Facilities:

- Last call for in-person food or beverage services at 10:00pm
- Masks required except when seated to eat or drink.

Closer/Prolonged Contact Establishments: Bowling alleys, pool halls, bingo halls, arcades, indoor playgrounds, children's play centers

- Last call for in-person food or beverage services at 10:00pm
- Mask required when not seated to eat or drink
- Ensure that groups and individuals are six feet apart at establishment
- Groups limited to eight people unless larger group is all same household

Nonessential/elective surgeries: A hospital must reduce its in-patient nonessential surgeries to a level to ensure it is use at least 25% fewer beds than it did on average during September 2020.